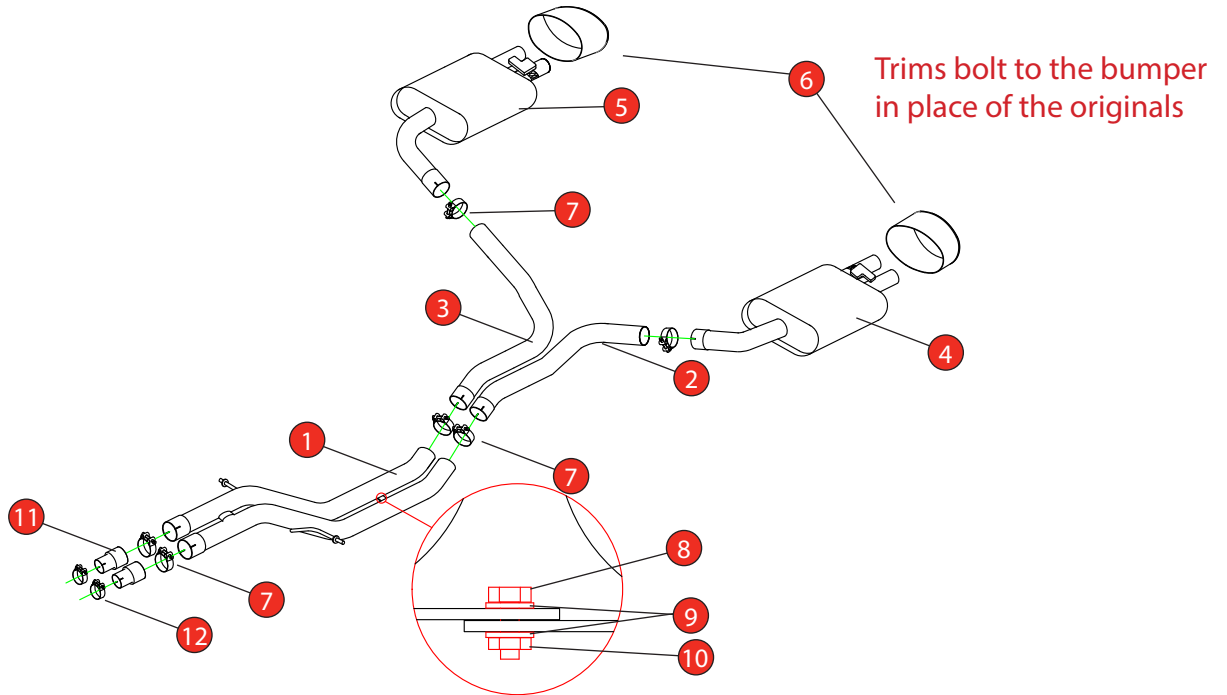


| | | | |
|--------------|--|-----------------|--|
| Car | Audi RS6 Avant C7 | Part No. | SAUS087CF |
| Year | 2014-2018 | Fit Kits | 367FK |
| Notes | Where not supplied use original fittings | Features | Pipe Diameter:- 70mm Replaces OE in-bumper tailpipe trims |

Estimated Fitting Time: 2 Hours



| NO. | PART NO. | DESCRIPTION | QTY |
|----------------|------------|--|-----|
| 1 | 799AU | Non-resonated Centre Section | 1 |
| 2 | 863AU | L/H Rear Link Pipe | 1 |
| 3 | 864AU | R/H Rear Link Pipe | 1 |
| 4 | 865AU | L/H Rear Silencer | 1 |
| 5 | 866AU | R/H Rear Silencer | 1 |
| 6 | Z023.10168 | Carbon Fibre Ascari RS Trims (Pair) | 1 |
| Fit Kit | | | |
| 7 | Z016.10063 | 72mm H/D Clamp | 4 |
| 8 | Z017.10044 | M8 Hex Head Bolt | 1 |
| 9 | Z017.10831 | M8 x 17mm Washer | 2 |
| 10 | Z017.10063 | M8 Nut | 1 |
| 11 | AD40 | Adator (USE TO FIT TO O.E SYSTEM) | 2 |
| 12 | Z016.10001 | 59-63mm Clamp (USE TO FIT TO O.E SYSTEM) | 2 |

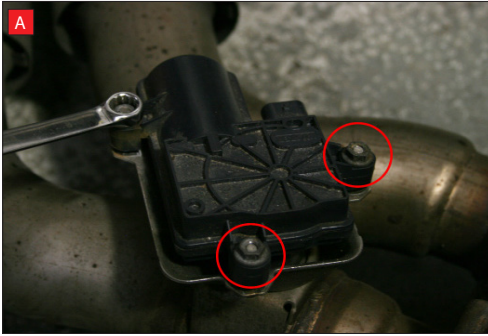
| | |
|------------|------------|
| DATE | 25/01/2023 |
| ISSUE | 00 |
| AUTHORISED | S Shipley |

NOTE: ENSURE SCORPION SYSTEM IS CLEAR OF MOVING PARTS AND ALL ORIGINAL FUNCTIONS WORK CORRECTLY.



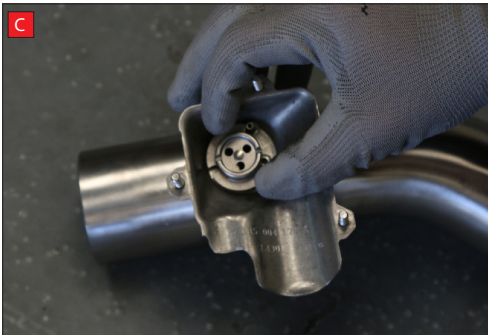
STAY CONNECTED TO RED POWER.

| | | | |
|-------|--|----------|--|
| Car | Audi RS6 Avant C7 | Part No. | SAUS087 |
| Year | 2014-2018 | Fit Kits | 367FK |
| Notes | Where not supplied use original fittings | Features | Pipe Diameter:- 70mm Replaces OE in-bumper tailpipe trims |



A) After you have removed O.E exhaust you will need to swap the valve motors to the Scorpion exhaust. Remove the 3 nuts (keep safe as you will need them to bolt the electronic valve motor to Scorpion Exhaust).

B) Lift up the motor. You will now be able to see the torsion spring (This must stay on the electronic valve motor to work with Scorpion Exhaust).



C) Rotate Scorpion valve so it aligns with the torsion spring.

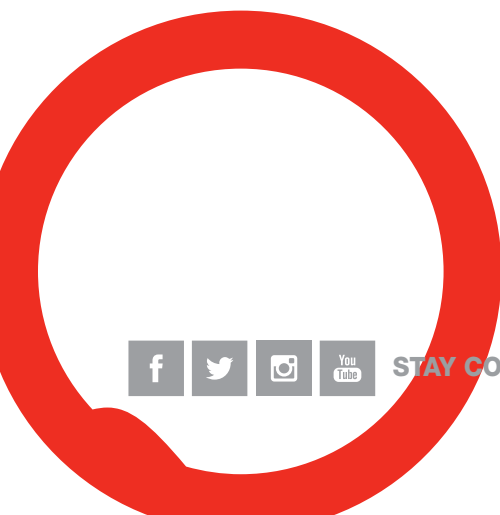
D) Now fit the O.E electronic valve motor ensuring the spring seats correctly to the lugs of the valve.

E) Using the 3 O.E nuts secure in place.



F) When fitting the centre section use the nut and bolt provided to align the centre pipes and secure them in place.

Once happy with fitment of Scorpion Exhaust, fully tighten up all clamps and fixing and plug in the electronic valve motors.



STAY CONNECTED TO RED POWER.